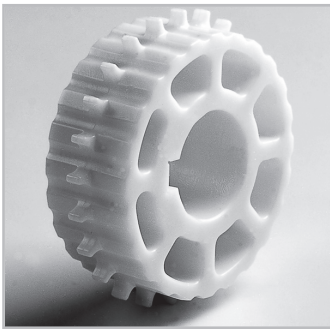


KVP[®] Sprockets – 1/2" Pitch Belting SM605, CM605



Your Source For Habasit
Belting And Chain

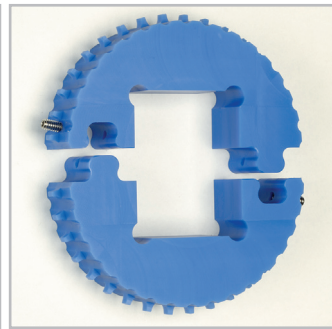
www.StilesEnterprises.com • 1-800-325-4232



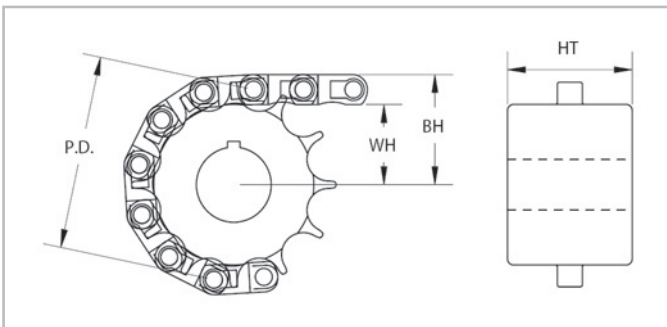
Molded sprocket



Machined sprocket



Puzzle split sprocket



Sprocket part number	Number of teeth	(PD) Nominal pitch diameter		(WH) Shaft center to top of wearstrip		Smooth Mesh (BH) Shaft center to top of belt		Curved Mesh (BH) Shaft center to top of belt		(HT) Hub thickness	
		inch	mm	inch	mm	inch	mm	inch	mm	inch	mm
70512M	12	1.90	48	0.80	20	1.10	28	1.14	29	1.5	38
70515M	15	2.40	61	1.05	27	1.35	34	1.39	35	1.5	38
70519	19	3.02	77	1.37	35	1.67	42	1.71	43	1.5	38
70524M	24	3.90	99	1.80	46	2.10	53	2.14	54	1.5	38
70528	28	4.47	114	2.09	53	2.39	61	2.43	62	1.5	38
70536M	36	5.80	147	2.75	70	3.05	77	3.09	78	1.5	38

M = molded sprocket.

Split sprockets and other tooth sizes are available. Standard machined sprocket material is UHMW, Nylon and Urethane are available. Please contact your local partner.

Sprocket part number	Available bore size														
	20 mm	3/4"	25 mm	25 mm sq.	1"	1" sq.	30 mm	1-1/4"	1-7/16"	1-1/2"	1-1/2" sq.	2" sq.	40 mm	40 mm sq.	2-1/2" sq.
70512M				-		-	-	-	-	-	-	-	-	-	-
70515M	-	-					-	-							
70519															
70524M	-	-													
70528															
70536M	-	-	-	-											

M = molded sprocket.

All bore sizes are round bore unless designated square (sq.).