

KVP® Straight 1.1" Pitch Belting F51 (1/2" x 1" Flat Wire)

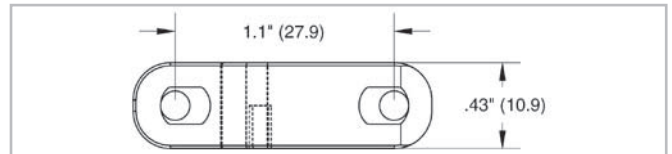
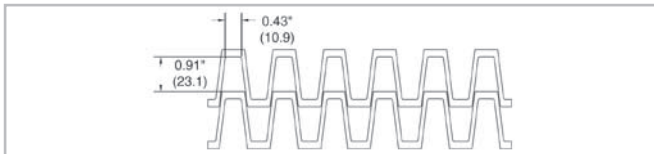
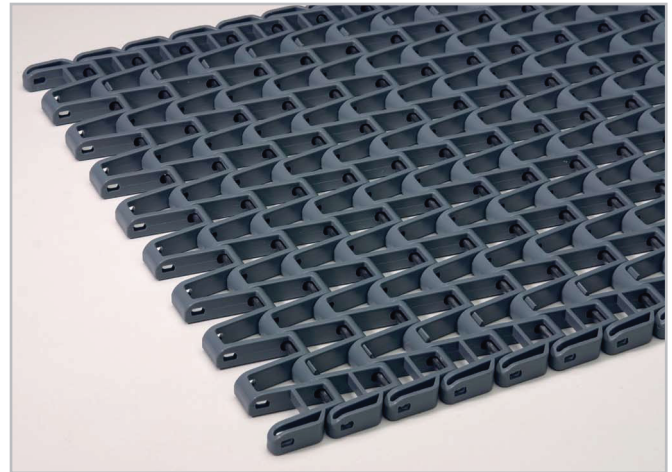


Your Source For Habasit
Belting And Chain

www.StilesEnterprises.com • 1-800-325-4232

Description

- 1.1 inch pitch
- 69% open area — 1/2" x 1" (12.7 mm x 25.4 mm)
- Food approved materials
- Connecting rod diameter = 0.145 inch (3.7 mm)
- Standard belt width increments = 1.33 inches (33.8 mm) nominal, starting from 4 inches (101.6 mm)
- Material selection may affect belt width — please contact your local partner for actual dimensions
- Bi-directional — contact your local partner

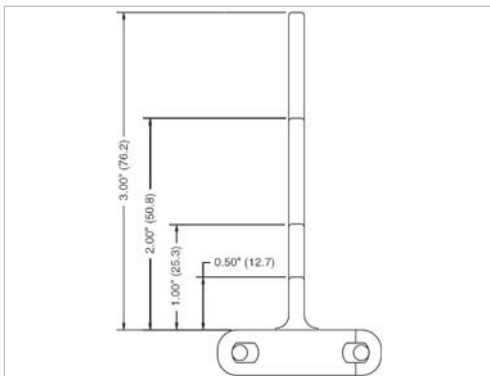


Belt data

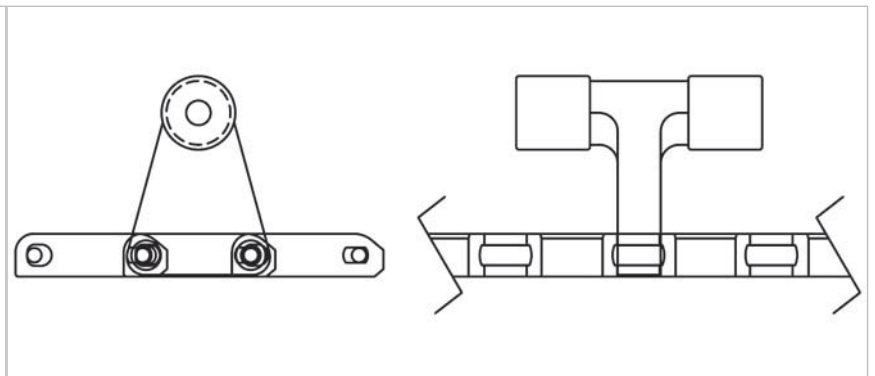
Belt material		PP	PP +GR	POM	Nylon (PA 612)	Nylon (PA +GF)
Rod material		PP			Nylon (PA)	Stainless Steel
Nominal tensile strength F' _N straight run	N/m	4378	4378	8756	7297	8766
	lb/ft	300	300	600	500	600
Temperature range	°C	5 - 105	5 - 105	5 - 93	-40 - 118	-40 - 145
	°F	40 - 220	40 - 220	40 - 200	-40 - 245	-40 - 293
Temperature maximum (short-term)	°C					175
	°F					347
Belt weight m _B	kg/m ²	3.0	3.0	4.4	3.7	4.5
	lb/sqft	0.62	0.62	0.90	0.76	0.93
Standard belt color		gray/white	gray	blue	beige	red

Additional belt colors and materials available, abrasive resistant Nylon (Polyamide) and stainless steel rods available - contact your local partner.

Belt accessories



Flights
Standard flights are available in 1/2", 1", 2" and 3" heights.



Hanging roller assembly