

KVP[®] straight 1.1" pitch belting F52 (1/2" x 1/2" Flat Wire)

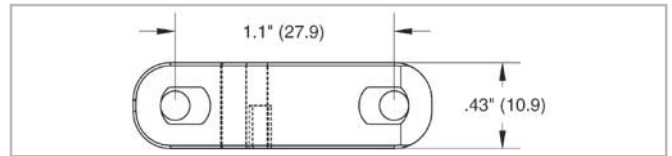
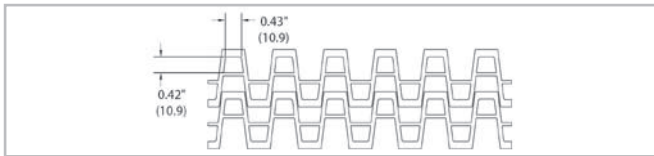
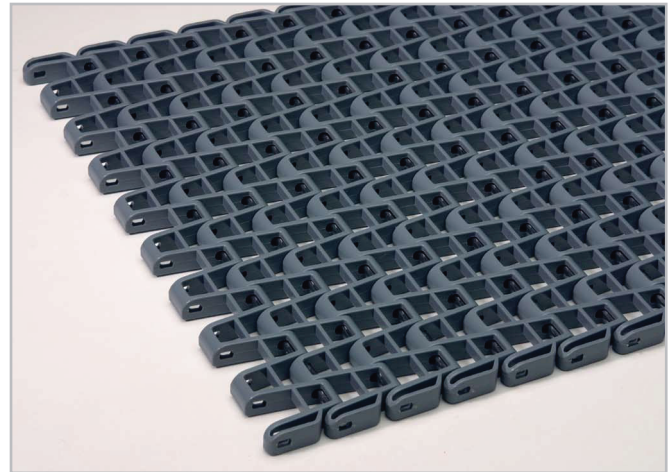


Your Source For Habasit
Belting And Chain

www.StilesEnterprises.com • 1-800-325-4232

Description

- 1.1 inch pitch
- 65% open area — 1/2" x 1/2" (12.7 mm x 12.7 mm)
- Food approved materials
- Smart Fit and standard rod retention available
- Rod diameter = 0.145 inch (3.7 mm)
- Standard belt width increments = 1.33 inches (33.8 mm) nominal, starting from 4 inches (101.6 mm)
- Material selection may affect belt width — please contact your local partner for actual dimensions
- Bi-directional — contact your local partner

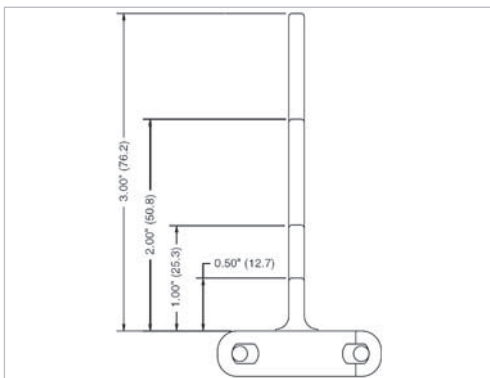


Belt data

Belt material		PP	PE	POM	Nylon (PA 612)	Nylon (PA +GF)	Nylon (PA +HN)
Rod material		PP			Nylon (PA)	Stainless Steel	
Nominal tensile strength F' _N straight run	N/m	4378	3502	8756	7297	8756	8756
	lb/ft	300	240	600	500	600	600
Temperature range	°C	5 - 105	5 - 65	5 - 93	-40 - 118	-40 - 145	-40 - 170
	°F	40 - 220	40 - 150	40 - 200	-40 - 245	-40 - 293	-40 - 338
Temperature maximum (short-term)	°C					175	200
	°F					347	392
Belt weight m _B	kg/m ²	3.0	2.4	4.7	3.9	7.7	7.7
	lb/sqft	0.62	0.49	0.96	0.79	1.57	1.57
Standard belt color		gray/white	white	blue	beige	red/brown	maroon

Additional belt colors and materials available, abrasive resistant Nylon (Polyamide) and stainless steel rods available - contact your local partner.

Belt accessories



Flights
Standard flights are available in 1/2", 1", 2", and 3" heights.